

## DA0206A

### ZONE DAMPER MOTOR

#### PRODUCT SPECIFICATION SHEET



### INSTALLATION

The DA0206A can be mounted directly onto the protruding damper shaft using the sleeve attached to the motor output shaft. Drill the prescribed hole directly below the damper shaft to accept the anti-rotation shaft protruding from the base of the motor. The length of the damper shaft to which the motor sleeve is attached is such as to firmly hold the motor in a position to adequately engage the anti-rotation pin in the duct. See Figure 3 for the critical dimensions.

### APPLICATION

The DA0206A is a two-position, 240 volt drive open/drive close damper motor designed to operate directly driven zone dampers, used to control air flow in ducts.

The motor can be driven open using any 240Vac rated SPDT switch – eg. a wall switch or a thermostat sub-base switch.

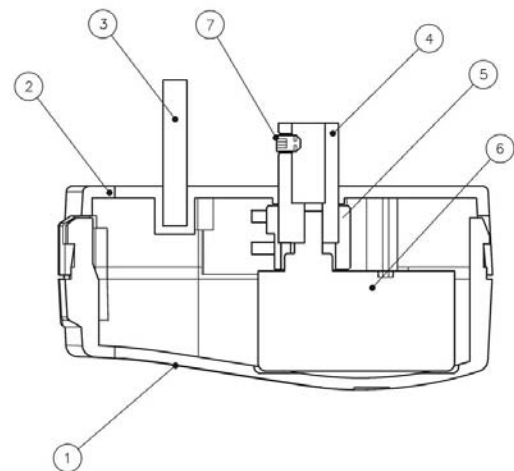


Figure 1. Mechanical Structure

#### < LEGEND >

- 1. COVER
- 2. BASE
- 3. ANTI-ROTATION
- 4. SHAFT SLEEVE
- 5. CAM
- 6. MOTOR
- 7. SET SCREW

### SPECIFICATIONS

- ELECTRICAL RATING : 240 Volt 50 Hz , 4 watts(max)
- ELECTRICAL CONNECTION : 1 meter cable attached
- NOMINAL ANGULAR ROTATION : 90°
- TORQUE : Min 1.5 Nm (211 in.oz) output torque available when motor is energized .
- MOTOR TIMING : Energized – at rated load, 240 Vac power source, with 25°C ambient : 24sec / 1cycle nominal.
- AMBIENT TEMPERATURE RATING : 0 to 60°C (32 to 140°F)
- DIRECTION OF SHAFT ROTATION (viewed from the base or shaft end) : CCW
- MOUNTING MEANS : direct connection to damper shaft and anti-rotation pin.
- MOUNTING POSITION : multi-poise

## WIRING

### CAUTION

Disconnect Power Supply before wiring the control to prevent electrical shock and equipment damage.

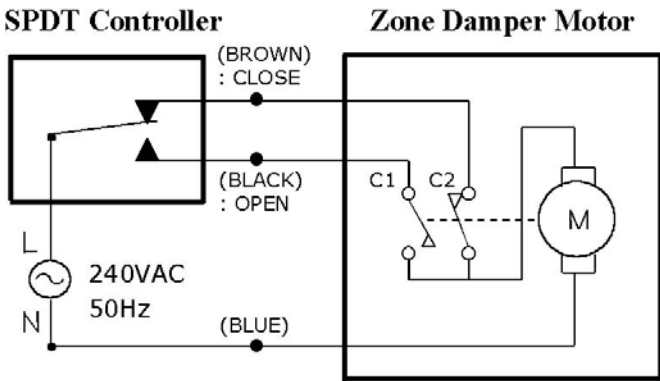


Figure 2. Wiring Diagram

### WARNING

1. Do not attempt to simulate operation of the motor by rotating the connection coupling or the damper shaft when it is connected to the operator.
2. Abuse of this nature can result in stripping the gears in the drive train of the operator.
3. Honeywell is not responsible for damages resulting from misapplication or misuse of its products.

## DIMENSION

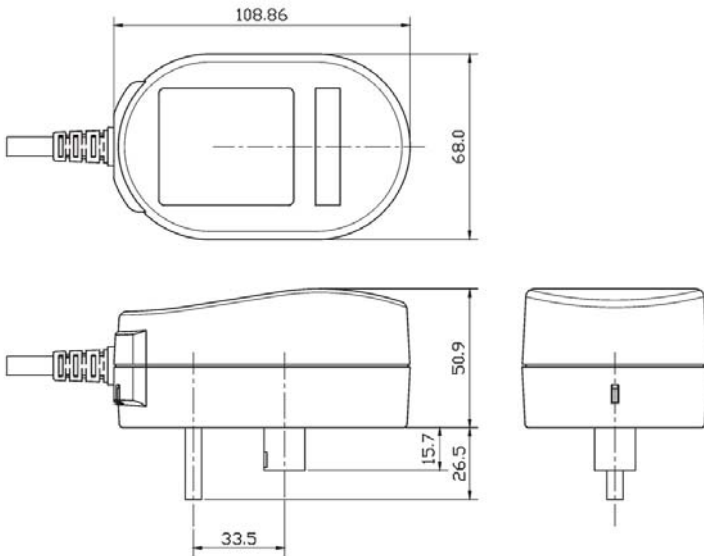


Figure 3. Dimensional Details (unit : mm)

# Honeywell

Honeywell Limited  
 25/F Honeywell Tower  
 Olympia Plaza  
 255 King's Road  
 North Point, Hong Kong